

## Air Conditioning Technical Data

# FTXC-A



- > FTXC25AV1B
- > FTXC35AV1B
- > FTXC50AV1B
- > FTXC60AV1B



# TABLE OF CONTENTS

## FTXC-A

1	Features .....	2
2	Specifications .....	3
	Technical Specifications .....	3
	Electrical Specifications .....	4
3	Dimensional drawings .....	5
4	Piping diagrams .....	7
5	Wiring diagrams .....	9
	Wiring Diagrams - Single Phase .....	9
6	Sound data .....	11
	Sound Pressure Spectrum .....	11

# 1 Features

Wall mounted unit, offering good value for money and ensuring a steady supply of clean air

- Flat, stylish front panel blends easily within any interior décor and is easier to clean
- Choosing for an R-32 product, reduces the environmental impact with 68% compared to R-410A and leads directly to lower energy consumption thanks to its high energy efficiency
- Seasonal efficiency values up to A+ in cooling and heating
- Whisper quiet in operation down to 21 dBA

1



Fan only



Powerful mode



Auto cooling-  
heating  
changeover



Comfortable  
sleeping mode



Vertical auto  
swing



Auto fan speed



Fan speed  
steps



Dry programme



Air filter



24 hour timer



Infrared remote  
control



Auto-restart



Self diagnosis

## 2 Specifications

2-1 Technical Specifications					FTXC25A		FTXC35A		FTXC50A		FTXC60A			
Power input	Cooling		Nom.		kW		693		1,060		1,668		1,931	
	Heating		Nom.		kW		700		950		1,550		1,680	
Casing	Colour					White								
	Material					High impact polystyrene								
Dimensions	Unit		Height/Width/Depth		mm		288/859/209				310/1,124/237			
	Packed unit		Height/Width/Depth		mm		367/970/303				400/1,252/333			
Weight	Unit				kg		9.0				14.0			
	Packed unit				kg		10.5				15.5			
Packing	Material					EPS / Corrugated board								
	Weight				kg		1.5							
Heat exchanger	Length				mm		610				858			
	Rows		Quantity			2								
	Fin pitch				mm		1.4							
	Face area				m²		176,694				288,288			
	Stages		Quantity			14				16				
	Tube type					Hi-X								
	Tube material					Copper								
	Tube diameter				mm		7.0							
	Fin		Type			ML fin (Multi louver)				Slit fin				
			Treatment			Hydrophilic								
	Empty tubeplate hole		Quantity			0								
Air filter	Type					Removable / washable								
	Quantity				pc		2							
Fan	Type					Cross flow fan								
	Quantity					1								
	Air flow rate	Cooling	High	m³/min		9.8		10.1		15.0		18.5		
				cfm		345		358		529		654		
			Mediu m	m³/min		7.7		8.0		13.3		16.6		
				cfm		272		282		471		585		
			Low	m³/min		6.1		6.6		11.8		14.4		
				cfm		215		232		418		507		
			Silent operati on	m³/min		4.7				10.6		12.4		
				cfm		165				374		437		
			Super high	cfm		378		392		578		703		
				m³/min		10.7		11.1		16.4		19.9		
			Heating	High	m³/min		9.8		10.1		15.3		18.9	
					cfm		345		358		542		667	
		Mediu m		m³/min		7.7		8.0		13.3		16.6		
				cfm		272		282		471		585		
		Low		m³/min		6.1		6.6		11.8		14.4		
				cfm		215		232		418		507		
		Silent operati on		m³/min		4.7				10.6		12.4		
				cfm		165				374		437		
		Super high		cfm		378		392		578		703		
				m³/min		10.7		11.1		16.4		19.9		
	External static pressure	Super high		Pa		0								
		High		Pa		0								
		Nom.		Pa		0								
		Low		Pa		0								
		Maximu m availabl e	High	Pa		0								
			Mediu m	Pa		0								

## 2 Specifications

2

2-1 Technical Specifications				FTXC25A	FTXC35A	FTXC50A	FTXC60A	
Fan motor	Quantity			1				
	Model			MWM10/15J-501		MWMY20/25JR		
	Index of Protection			20				
	Insulation grade			Class "E"				
	Poles			4		8		
	Drive			Direct drive				
	Speed	Steps		3 steps, turbo, quiet, auto				
		Cooling	High/ Mediu m/Low/ Silent operati on	rpm	1,240/1,020/850/700	1,280/1,050/900/700	1,050/960/870/800	1,250/1,140/1,010/900
		Heating	High/ Mediu m/Low/ Silent operati on	rpm	1,240/1,020/850/700	1,280/1,050/900/700	1,090/960/870/800	1,280/1,140/1,010/900
	Output	Rated	W	18		40		
Full load amps (FLA)	Cooling	A	0.19	0.21	0.32	0.56		
	Heating	A	0.19	0.21	0.33	0.56		
Phase x Voltage			V	1 x 230V		DC310		
Sound power level	Cooling		dBA	53	54	55	61	
	Heating		dBA	-				
Sound pressure level	Cooling	Super high/High/ Low/Silent operation	dBA	41/40/29/21	42/41/30/22	44/40/35/32	46/43/37/33	
Piping connections	Liquid	Type/OD	mm	Flare connection/6,4				
	Gas	Type/OD	mm	Flare connection/9.5		Flare connection/12.7		
	Drain			OD16,5				
	Heat insulation			Both liquid and gas pipes				
Temperature control				Microcomputer control				
Air direction control				Right, Left, Horizontal, Downward				

Standard Accessories : Installation manual;  
 Standard Accessories : Operation manual;  
 Standard Accessories : Wireless remote control;  
 Standard Accessories : Batteries;  
 Standard Accessories : Remote control holder;  
 Standard Accessories : Mounting plate;  
 Standard Accessories : Titanium apatite filters;

2-2 Electrical Specifications				FTXC25A	FTXC35A	FTXC50A	FTXC60A
Power supply	Name			V1			
	Phase			1~			
	Frequency		Hz	50			
	Voltage		V	220-240			
Voltage range	Min.		%	-10			
	Max.		%	10			
Current - 50Hz	Maximum running current		A	6.75	7.75	16.3	16.6
	Maximum fuse amps (MFA)		A	16		20	
Current	Nominal running current (RLA) - 50Hz	Cooling	A	3.82	5.73	7.36	8.52
		Heating	A	3.83	5.19	6.86	7.46
Wiring connections - 50Hz	For power supply	Remark		Power supply to outdoor unit			

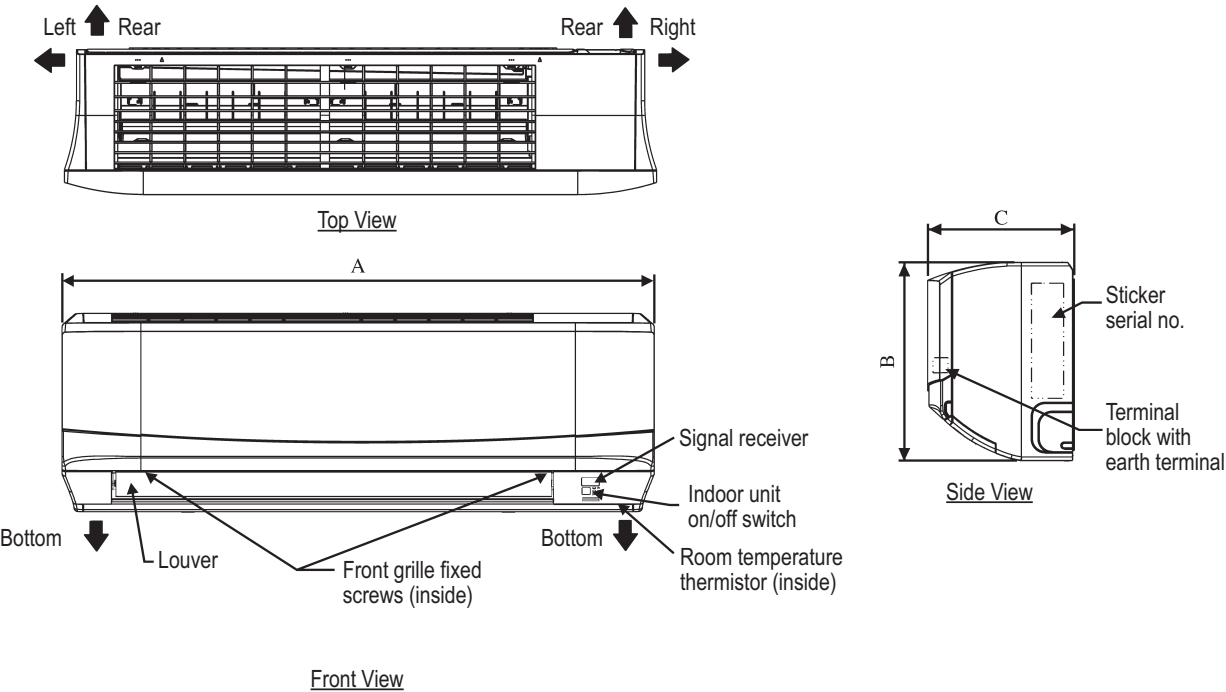
4

3 Dimensional drawings

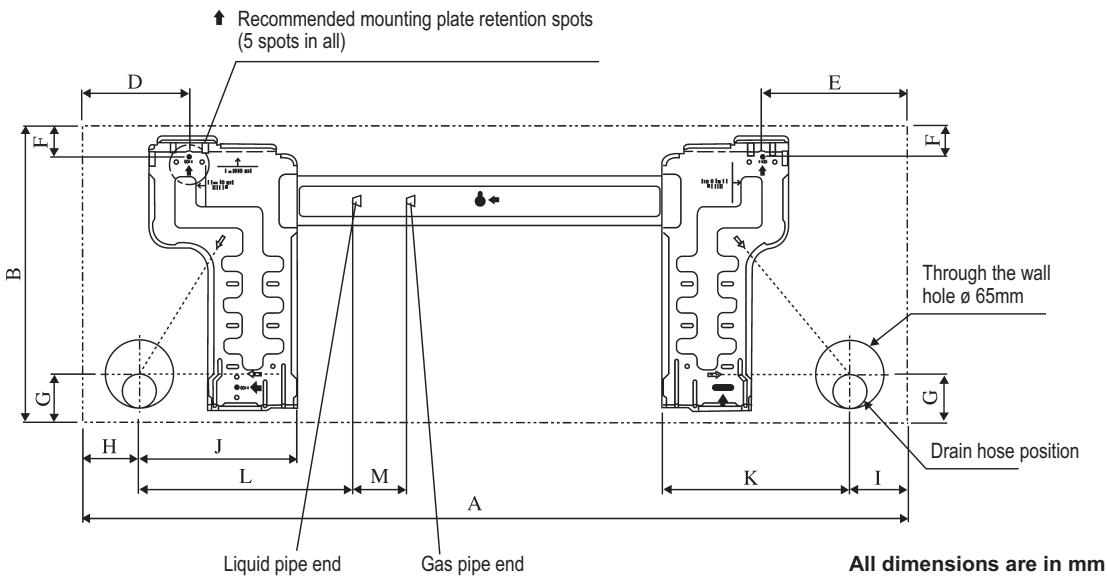
3 - 1 Dimensional Drawings

FTXC-A

The mark (→) shows piping direction



FTXC25-35A



Model	Dimensions	A	B	C	D	E	F	G	H	I	J	K	L	M
25/35		859	288	209	104	141	30	46	55	56	153	181	207	52

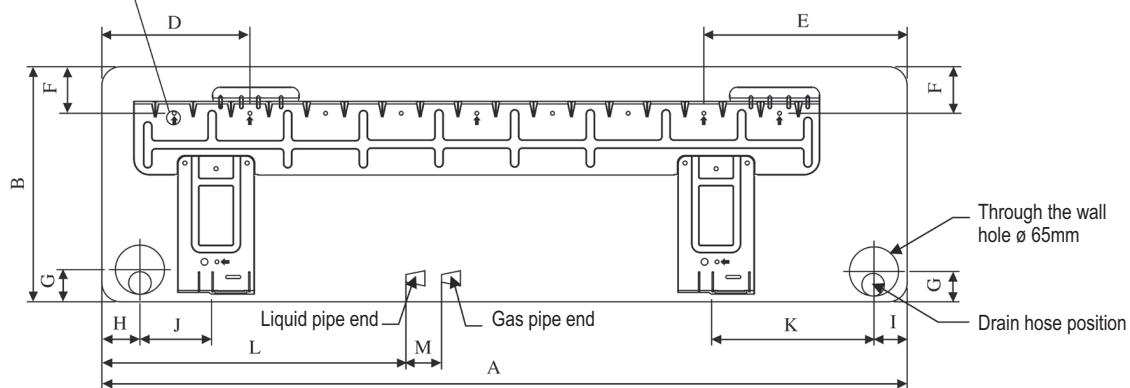
### 3 Dimensional drawings

#### 3 - 1 Dimensional Drawings

3

FTXC50-60A

↑ Recommended mounting plate retention spots  
(7 spots in all)



All dimensions are in mm

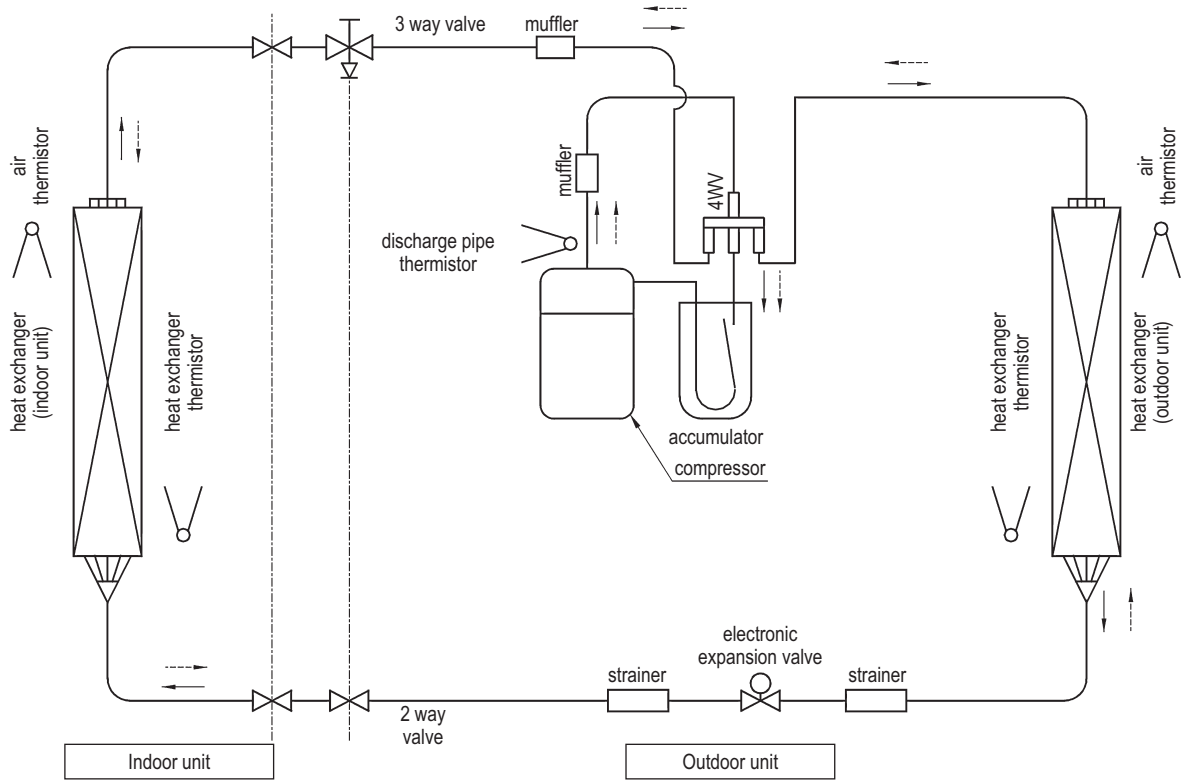
Model	Dimensions	A	B	C	D	E	F	G	H	I	J	K	L	M
50/60		1124	310	237	190	173	61	40	45	48	91	219	580	45

## 4 Piping diagrams

### 4 - 1 Piping Diagrams

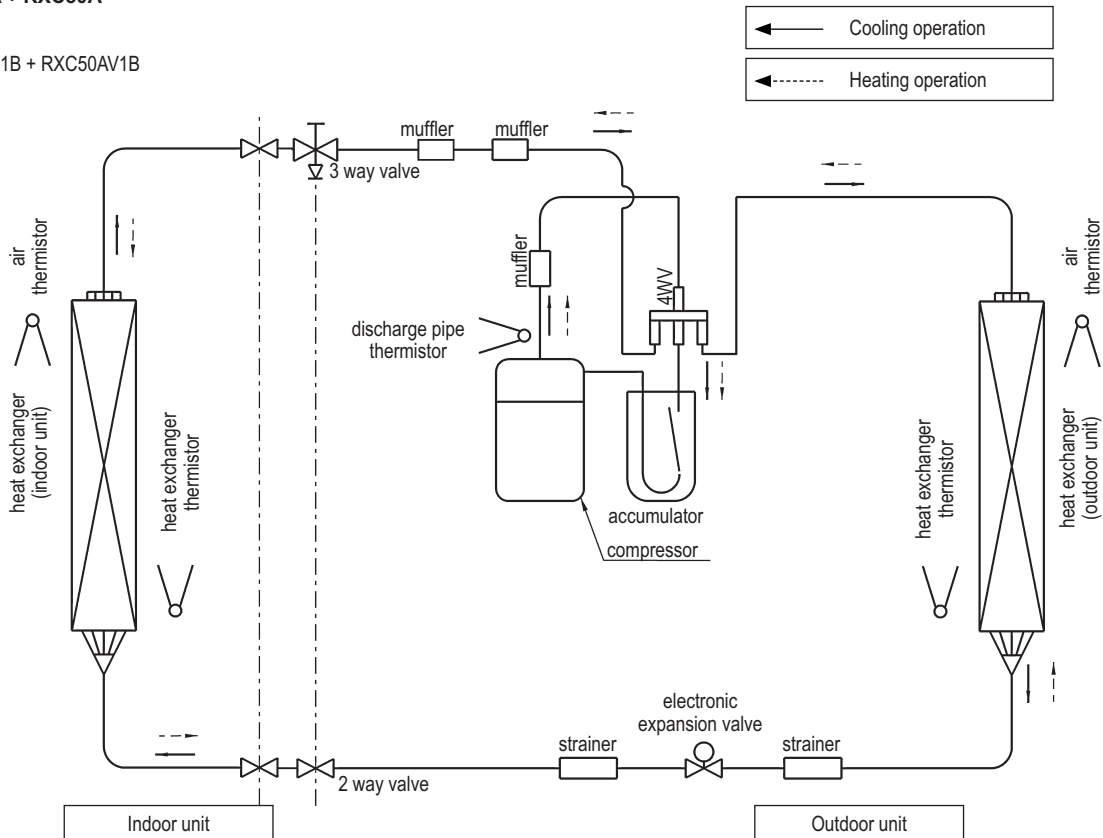
#### FTXC25-35A + RXC25-35A

Models:  
FTXC25AV1B + RXC25AV1B  
FTXC35AV1B + RXC35AV1B



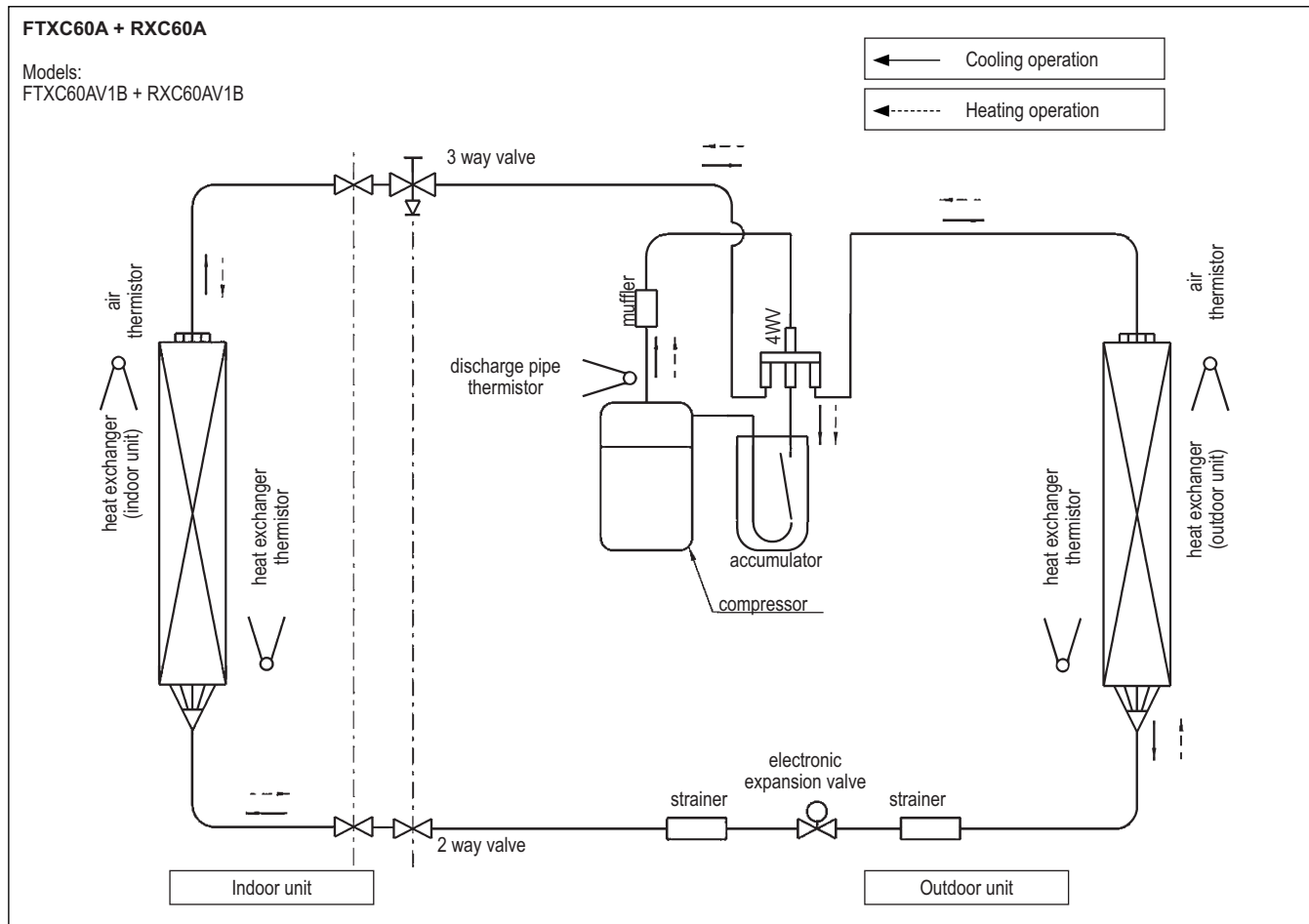
#### FTXC50A + RXC50A

Models:  
FTXC50AV1B + RXC50AV1B



## 4 Piping diagrams

### 4 - 1 Piping Diagrams

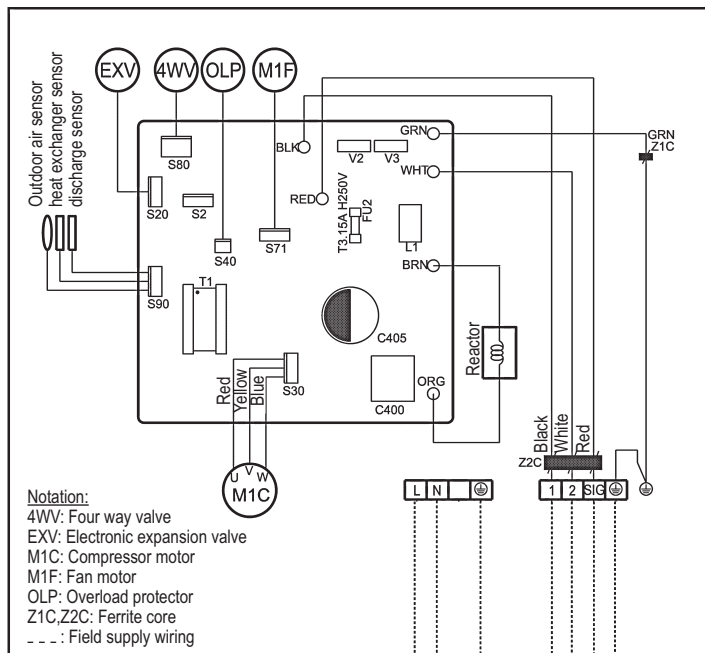
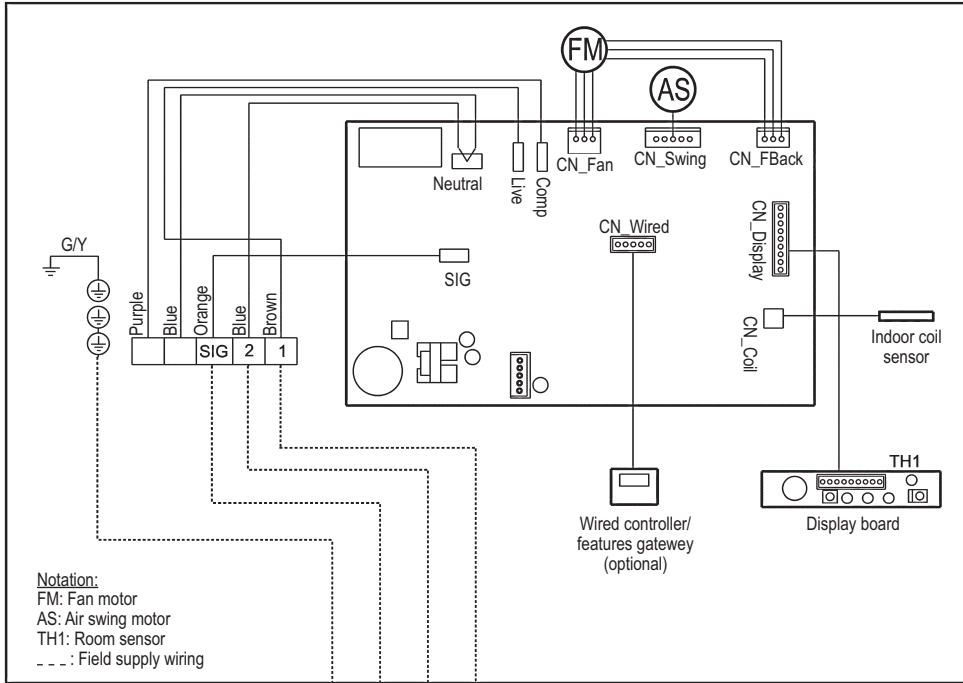


## 5 Wiring diagrams

### 5 - 1 Wiring Diagrams - Single Phase

#### FTXC25-35A + RXC25-35A

Wiring Diagram:  
FTXC25AV1B - RXC25AV1B  
FTXC35AV1B - RXV35AV1B



Power supply  
220-240V/1Ph/50Hz

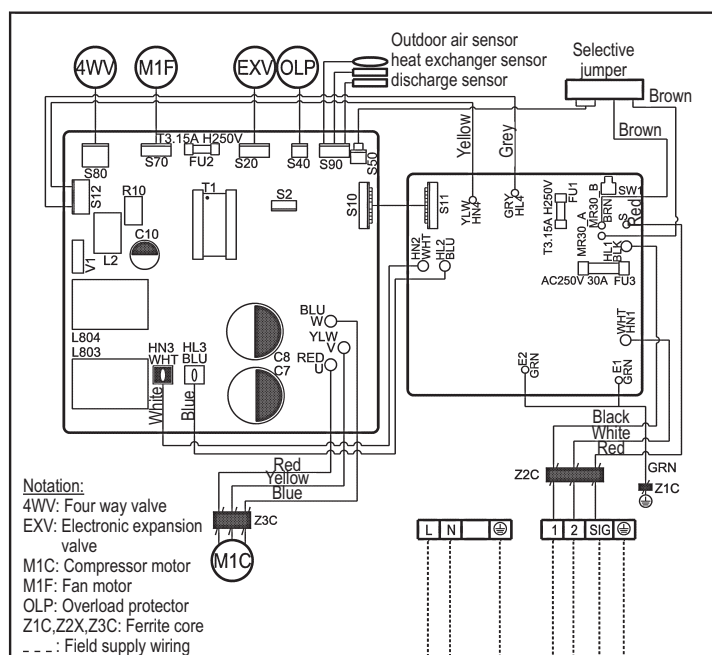
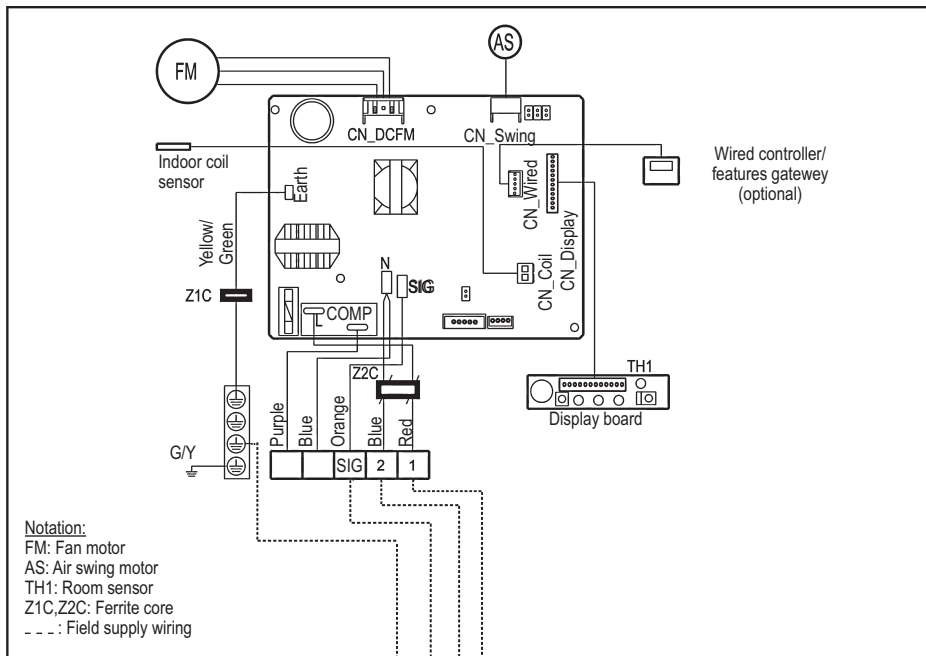
L →  
N →  
E →

## 5 Wiring diagrams

### 5 - 1 Wiring Diagrams - Single Phase

#### FTXC50-60A + RXC50-60A

Wiring Diagram:  
FTXC50AV1B - RXC50AV1B  
FTXC60AV1B - RXV60AV1B



Power supply  
220-240V/1Ph/50Hz

L ---  
N ---  
E ---

# 6 Sound data

## 6 - 1 Sound Pressure Spectrum

### FTXC-A

#### Sound Data

##### FTXC25AV1B

SPEED	1/1 Octave A-weighted Sound Pressure Level (dB, ref 20μPa)							Overall (dBA)	Noise Criteria
	125Hz	250Hz	500Hz	1kHz	2kHz	4kHz	8kHz		
TURBO	40	39	37	37	34	27	15	41	36
HIGH	36	38	36	36	33	25	13	40	35
MEDIUM	34	33	31	30	26	16	5	34	29
LOW	31	29	28	24	18	9	5	29	22
QUIET	26	22	20	15	8	5	3	21	N/A

##### FTXC35AV1B

SPEED	1/1 Octave A-weighted Sound Pressure Level (dB, ref 20μPa)							Overall (dBA)	Noise Criteria
	125Hz	250Hz	500Hz	1kHz	2kHz	4kHz	8kHz		
TURBO	37	40	38	38	35	28	18	42	37
HIGH	36	40	38	37	33	26	17	41	36
MEDIUM	32	33	31	30	26	18	11	34	29
LOW	31	30	28	25	21	15	9	30	23
QUIET	24	21	21	17	10	8	5	22	N/A

##### FTXC50AV1B

SPEED	1/1 Octave A-weighted Sound Pressure Level (dB, ref 20μPa)							Overall (dBA)	Noise Criteria
	125Hz	250Hz	500Hz	1kHz	2kHz	4kHz	8kHz		
TURBO	41	43	40	40	36	32	17	44	39
HIGH	37	39	35	36	33	27	13	40	35
MEDIUM	36	36	34	34	31	24	12	38	33
LOW	34	37	31	31	25	20	11	35	30
QUIET	33	35	29	27	21	17	6	32	26

##### FTXC60AV1B

SPEED	1/1 Octave A-weighted Sound Pressure Level (dB, ref 20μPa)							Overall (dBA)	Noise Criteria
	125Hz	250Hz	500Hz	1kHz	2kHz	4kHz	8kHz		
TURBO	45	45	40	41	40	35	22	46	41
HIGH	41	42	38	38	37	31	17	43	37
MEDIUM	41	40	36	37	34	28	14	41	36
LOW	39	37	33	32	30	23	11	37	32
QUIET	34	33	29	31	25	19	11	33	30

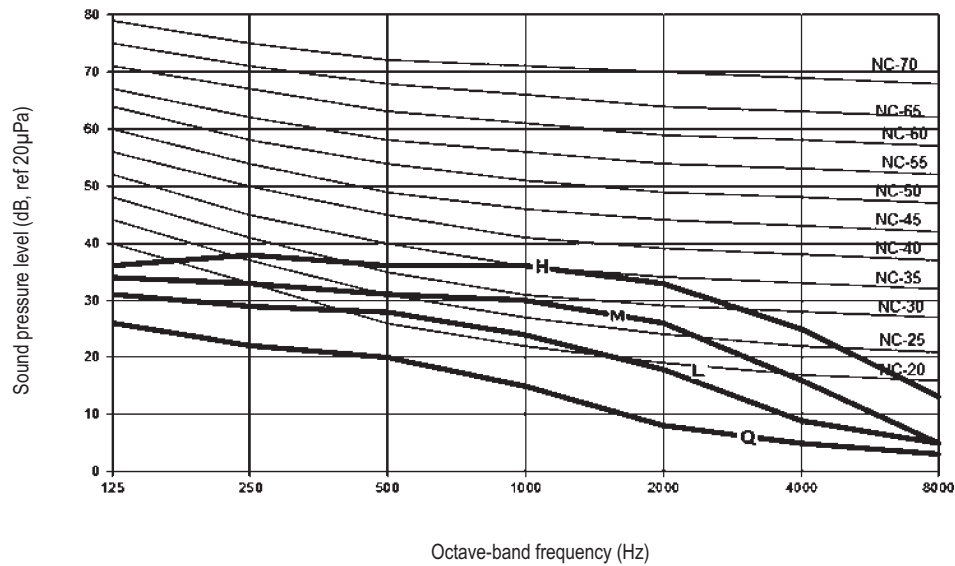
## 6 Sound data

### 6 - 1 Sound Pressure Spectrum

6

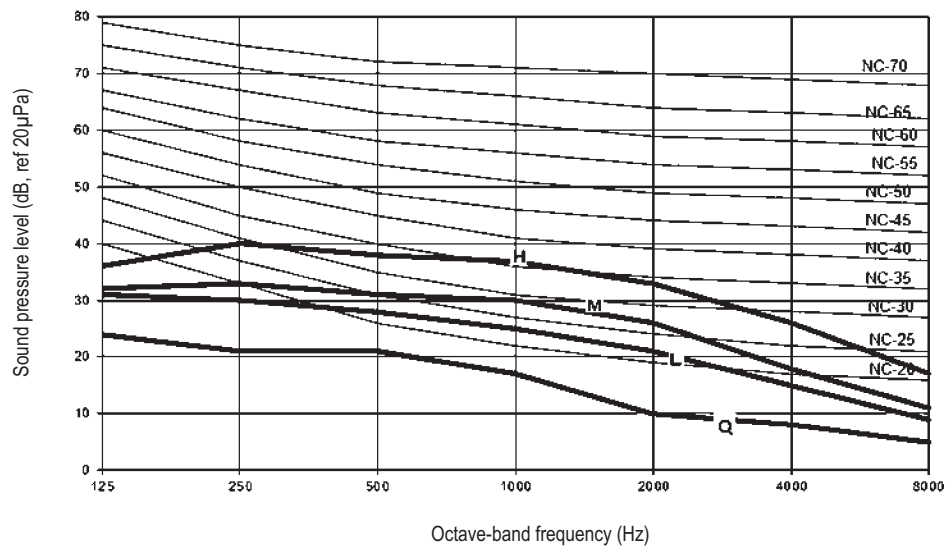
FTXC25A

Model: FTXC25AV1B



FTXC35A

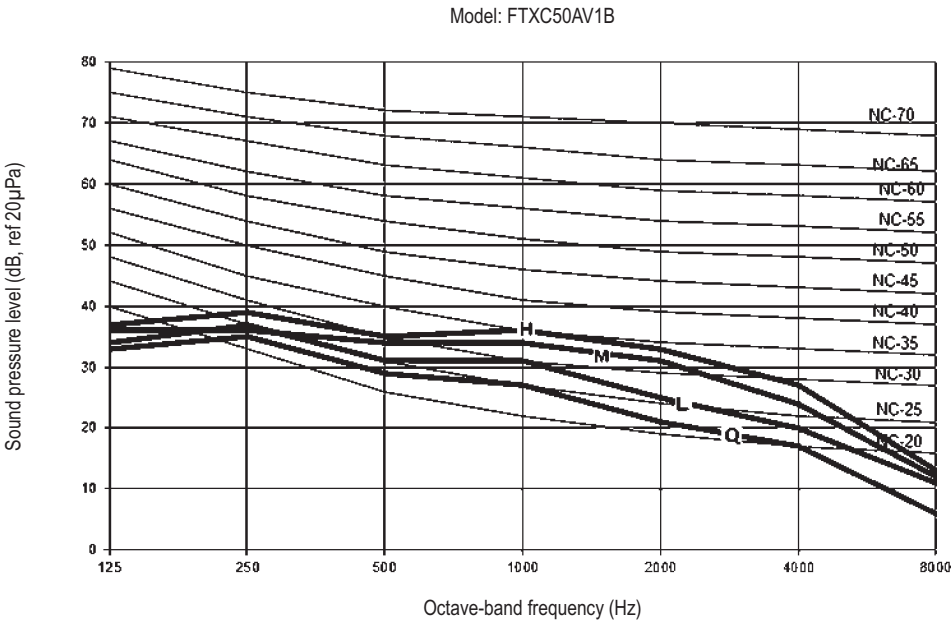
Model: FTXC35AV1B



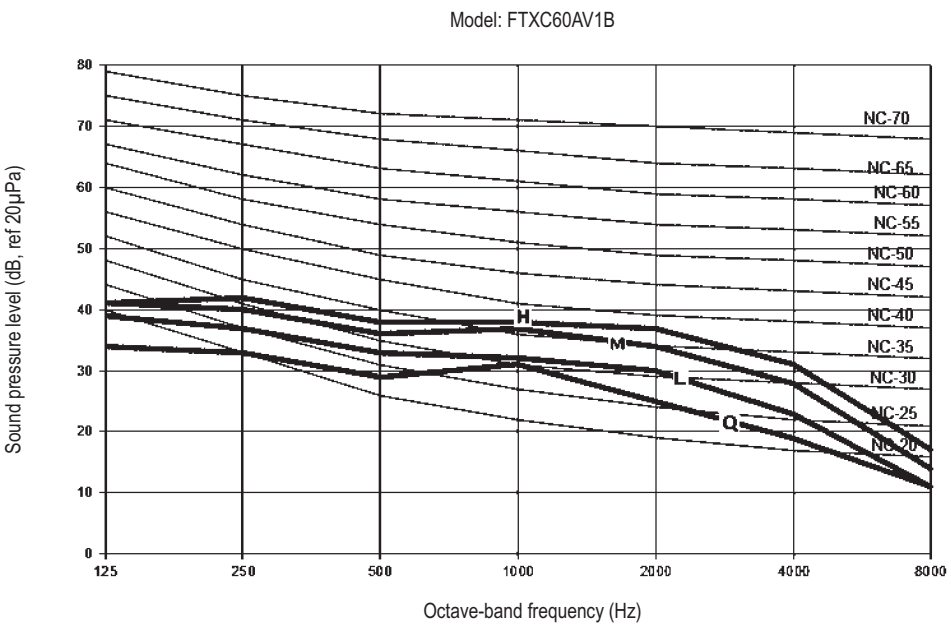
6 Sound data

6 - 1 Sound Pressure Spectrum

FTXC50A



FTXC60A





Daikin Europe N.V. Naamloze Vennootschap - Zandvoordestraat 300, B-8400 Oostende - Belgium - [www.daikin.eu](http://www.daikin.eu) - BE 0412 120 336 - RPR Oostende



EEDEN17

05/17



Daikin Europe N.V. participates in the Eurovent Certification programme for Liquid Chilling Packages (LCP), Air handling units (AHU), Fan coil units (FCU) and variable refrigerant flow systems (VRF) Check ongoing validity of certificate online: [www.eurovent-certification.com](http://www.eurovent-certification.com) or using: [www.certiflash.com](http://www.certiflash.com)



The present leaflet is drawn up by way of information only and does not constitute an offer binding upon Daikin Europe N.V.. Daikin Europe N.V. has compiled the content of this leaflet to the best of its knowledge. No express or implied warranty is given for the completeness, accuracy, reliability or fitness for particular purpose of its content and the products and services presented therein. Specifications are subject to change without prior notice. Daikin Europe N.V. explicitly rejects any liability for any direct or indirect damage, in the broadest sense, arising from or related to the use and/or interpretation of this leaflet. All content is copyrighted by Daikin Europe N.V.